

1988 - 89 OFFICERS
IOWA CHAPTER AFS

PRESIDENT
Mike Mason

PRESIDENT-ELECT
Larry Mitzner

PAST PRESIDENT
Marion Conover

SECRETARY/TREASURER
Martin Konrad

VOL. 4 NO. 3

NEWSLETTER

November, 1988

PRESIDENT'S CORNER

AFS MEMBERSHIP & FRIENDS OF THE IOWA CHAPTER

This message is directed at those Chapter members who do not yet belong to the American Fisheries Society. I often hear "nonmember members" complain that they don't belong to the AFS because it costs too much. The perception apparently is that the \$3.50 a month it would cost to join the AFS is not worth the benefits a person receives from the Parent Society. As with any organization, however, you get out of it what you put into it. The same goes for your job, profession or college education. The American Fisheries Society is the oldest and largest professional society representing fisheries scientists. I would hope that we all view fisheries as a profession and realize that continuing education, peer contact, and personal involvement are needed in our professional development. Because you are a "nonmember member" of the AFS you cannot:

1. be nominated for Chapter office and therefore help your Chapter develop and grow.
2. be a member of the North Central Division and receive the NCD newsletter The Mainstream.
3. receive a copy of the bimonthly bulletin FISHERIES from the parent society.
4. participate in one or more of the 14 sections which are: Fisheries Management, Fish Culture, Fish Health, Fishery Educators, Computer User, Bioengineering, Water Quality, Socioeconomics, Fish

Genetics, International Fish, Introduced Fish, Marine Fisheries, Early Life History, and Fisheries Administrators.

5. subscribe to Transactions, North American Journal of Fisheries Management, or the North American Journal of Fish Health.
6. receive discounts on books sold through AFS and reduced registration fees at AFS sponsored meetings, conventions, and continuing education programs.
7. utilize JOBSource to find volunteer, seasonal, intern/practicum, permanent, temporary, or graduate assistantship positions.
8. serve on one or more of the dozens of AFS committees.
9. receive a membership directory to assist communication with other fisheries professionals.
10. apply for certification as Associate Fisheries Scientist or Fisheries Scientist.
11. become involved in AFS activities which help you gain leadership and communication skills.
12. have yet made a sound career investment by joining the AFS.

So, please, please, pretty please join the Parent Society. **We need your participation to strengthen the organization and productivity of the Chapter.** Also, as you'll read further on in this newsletter (AFS NEWS), the Parent Society is about to break bad on you. For a membership form, please contact any AFS member or the **membership chairman, Marion Conover.** The start of the new year is the best time to join as you'll receive all the materials on a timely basis as opposed to receiving back issues.

CHAPTER OFFICER ELECTION RESULTS

A 74% return on the 66 mail-in ballots sent to members resulted in the election of **Larry Mitzner** as **President-elect** and **Martin Konrad** as **Secretary/Treasurer**. Thanks go to Bernie Schonhoff and Jerry Hudson for their willingness to serve as Chapter officers.

1989 IOWA CHAPTER ANNUAL MEETING OMAHA, NEBRASKA

The Iowa Chapter will hold its annual meeting at the Ak-Sar-Ben Aquarium outside of Omaha, Nebraska on February 21 and 22, 1989. The Iowa and Kansas Chapters will be guests of the Nebraska Chapter. Tentative plans/suggested topics are as follows:

Monday, February 20

5:00 PM-? RECEPTION (\$10.00 - also covers meeting break refreshments) at Ak-Sar-Ben Aquarium

Tuesday, February 21

8:00 AM - NOON:

- *Computers/PC's-What we are doing and where are we going?
- *Length and bag limits-Why and how are regulations working
- *Use of sperm extenders in Iowa fish culture
- *Iowa's saugeye program
- *Biosponge diet feeding trials in NE & KS
- *New multi-species hatchery in Nebraska
- *Stocking of channel catfish - sizes
- *Update on reorganization of Kansas Wildlife & Parks

12:00 - 1:00 LUNCH at 4-H Center (\$4.00)

1:00 - ? AFS - President-elect Joe Dillard
AFS Chapter Meetings
Banquet (\$10.00) and White Elephant Auction at Aquarium

Wednesday, February 22

8:00 AM - NOON: 4 papers from each state yet to be selected
Lunch at 4-H Center (\$4.00)

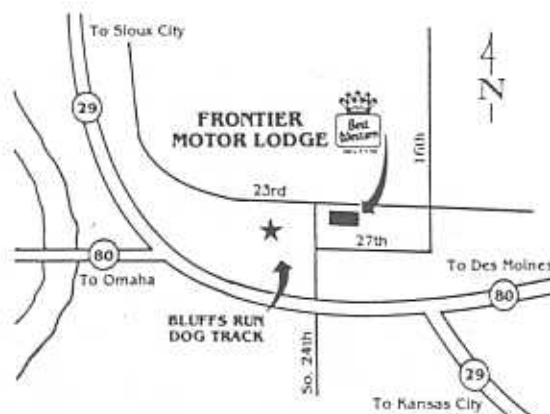
Iowa Program Chairman Larry Mitzner is asking that anyone interested in presenting a paper or has other suggestions for the meeting to contact him as soon as possible at (515)-774-2958.

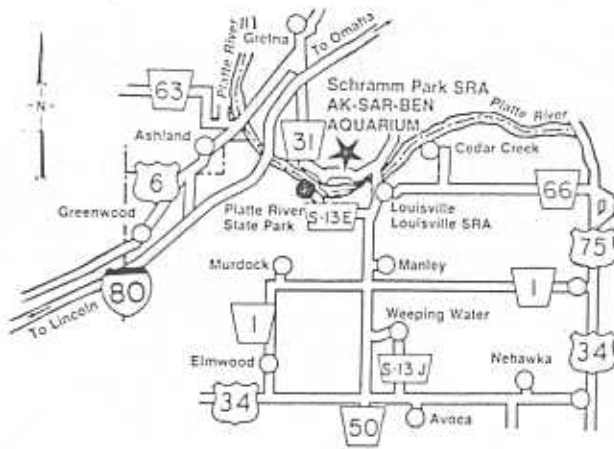
Motel arrangements have been made at the Best Western Frontier Motor Lodge in Council Bluffs to accommodate the Iowa Chapter members. The motel is located on Interstate 80/29 and S. 24th Street Exit (see map). Room rates are \$39.00 double and \$29.00 single. The cut off date for reservations is February 6, 1989. The motel has an indoor pool, sauna, whirlpool, putting green, and much more. Reservations can be made by calling (712)322-3150. Please identify yourself as an Iowa Chapter AFS member to get these reduced rates.

Anyone on a tight budget can stay at the 4-H Camp next to Ak-Sar-Ben Aquarium for \$8.00 per night. You must bring a sleeping bag, soap, towels, etc. The Kansas and Nebraska members will be lodging here. Contact Darrell Feit at the Ak-Sar-Ben Aquarium for reservations (402)332-3901.

Start now on collecting your items for the **White Elephant Auction**. Last year's auction netted \$800!! It beats selling raffle tickets and is a fun evening besides with auctioneer Dick Turpin of Nebraska. A raffle is also planned for some high ticket items - so bring plenty of cash or your checkbook. Ak-Sar-Ben Aquarium is approximately 35+ minutes from Council Bluffs and is located 6 miles south of I-80 exit 432 on Nebraska Route 31 (see map).

Also a reminder that 1989 Iowa Chapter dues will be collected at the annual meeting. Dues are only \$5.00 per year. Those members not planning to attend should send their dues to Martin Konrad, 400 N. 7th, Indianola, IA 50125.





THE IOWA SCENE

Brushy Creek Lake

The Natural Resource Commission, at its September meeting, **unanimously approved** the **Brushy Creek Master Plan** as presented by the DNR staff. The next step is its presentation to the legislative natural resource committees in the next legislative session for funding as requested in the DNR budget.

Iowa DNR to Request FMHA Acquired Properties

Legislation passed by Congress has allowed certain lands given back to the USDA Farmer's Home Administration to be transferred fee title to a federal or state agency. Lands qualifying for transfer include land that has marginal value, and land that is environmentally sensitive and of special management importance. The Iowa DNR will formally request land transfers on 10 identified properties. Four properties have value to sportfishing. These properties include: 80 acres in Delaware County along the Little Turkey River, 192 acres in Iowa County on the Iowa River, 231 acres in Sac County on the North Raccoon River, and 475 acres in Winneshiek County on Pine Creek.

Iowa REP

The Iowa REP (Resource Enhancement Program) seems to have won very little legislative attention despite pretty fair lobbying efforts by the group's stalwarts, according to IA AFS Chapter/REP liaison John Ramsey.

The issue may yet get grassroots support to influence the legislature. However, at a meeting of the Iowa REP - Conservation Funding Alliance on Oct. 27th, the meeting coordinators suggested that a full-time program director for REP might enhance progress. The Alliance members, which includes the Iowa AFS Chapter, may receive a proposal on staffing and funding a program director's slot.

OMEGA

On September 27, the Chariton Valley Resource Conservation and Development Executive Board (RC&D) announced the kick-off of the Omega Pilot Project. Omega is a title given to a concept that will help farmers develop alternative crops and products better suited than corn and soybeans to erosive soils, particularly land that will be coming out of the Conservation Reserve Program (CRP). According to RC&D Coordinator Chuck McCarty, "Forestry, forages and **aquaculture** will play a larger role in on-farm incomes as the Omega program develops; giving farmers options for diversification in what they grow and how they derive income. **Walleye**, walnut trees and elk will be some of the options." The Chariton Valley RC&D believes **walleye fish farming** can be successful in southern Iowa; the ponds needed to rear fish and the market for fish are both in place. An estimated 10,000 farm ponds exist in the four county area (Wayne, Lucas, Monroe, and Appanoose) that the RC&D covers. As a first step, the RC&D will conduct an inventory to determine which ponds are most suitable to fish rearing.



Agriculture Revitalization Grant

The Kirkwood Community College (Cedar Rapids) Rural Diversified Enterprise Center (RDEC) is the recipient of a Lottery funded grant awarded by the Iowa Dept. of Agriculture to help position Iowa producers of **Fish**, Rabbit and Poultry in the marketplace, according to RDEC facilitator Curtis Stutzman. A task force of producers, processors, suppliers and consumer representatives is being assembled for each of the three enterprise areas. The expected outcome of the two-year planning phase is to: 1) develop a rural planning model to foster participation of farmers in rural economic development, 2) position the three products in the marketplace, and 3) plan for the development of processors and other appropriate infrastructure.

A F S NEWS

118TH AFS ANNUAL MEETING

The five most critically important habitat issues in fresh water as well as in the marine environment were chosen for AFS action by EXCOM retreat participants. The issues chosen by the AFS leadership were:

Fresh Water Habitat Problems

- Non-point source pollution
- Acid rain
- Riparian habitat loss
- Toxic substances
- Wetland loss (tie)
- Instream flows (tie)

Marine Habitat Problems

- Wetland loss
- Ocean dumping
- Coastal development
- Estuarine anoxia
- Bottom alteration

*

Where authorized by the Chapters, the Parent Society will begin collecting Chapter dues in the late summer of 1989. The new dues bill will list all participating Chapters and the amount of their annual dues. Members wishing to join one or more of these Chapters will check the one(s) of their choice and enclose

the dues along with Parent Society and any Section membership(s) dues.

Chapters preferring to collect their own dues or Chapters having no dues will also be listed so that it will not appear that they have been overlooked. All information will be computerized and participating Chapters will periodically receive a name and address printout of their dues-paying members plus a check for accumulated dues payments. In addition, the EXCOM directed that one dollar of Parent Society dues be rebated to the Chapter of each member's choice or to the Chapter of the member's zip code where no preference is indicated. There will not be an increase in Society dues to cover this Chapter support.

*

The AFS Directory of North American Fisheries and Aquatic Scientists will be reprinted in 1989 provided fifty percent up-front financing can be arranged. Funding prospects look good.

*

The new AFS procedural manual developed by 1st Vice President Larry Nielsen was presented to EXCOM members. Printed copies will be available soon and will be mailed to any member providing a self-addressed envelope carrying 90 cents postage. Envelopes must be large enough to hold the 8 1/2 by 11-inch, 64-page manual.

*

President White has appointed a committee to implement the recommendations of the Committee on Recertification including "promoting" certification to employers and working with the Board of Certification and the Sections to develop a third tier of certification, the "Fisheries Specialist."

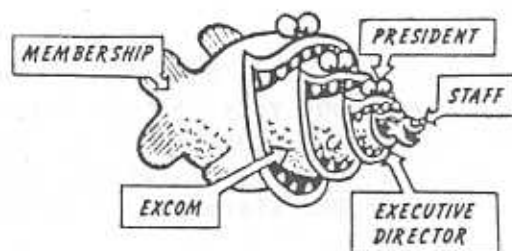
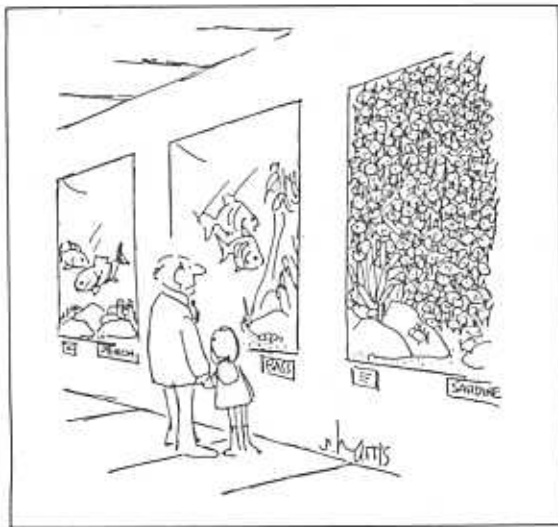


Figure 1. Organizational chart for the American Fisheries Society.

RECENT PUBLICATIONS

The Missouri River's Resources - Their Uses and Values, Special Publication No. 8, Proceedings of the Symposium presented at the 48th Midwest Fish & Wildlife Conference in Omaha, Nebraska is available for \$7.00. This publication can be obtained from NCD Publications Committee Chair Vaughn Paragamian, District Office, Manchester Fish Hatchery, Manchester, Iowa 52057. Make checks out to North Central Division-AFS.



MEETING AND EVENTS CALENDAR

Dec. 3-6, 1988 - Annual Meeting of the North Central Division of AFS. University Hilton, Columbus, OH. For info: Ken Fritz, OH DNR, Division of Wildlife, Fountain Square, Bldg. C4, Columbus, OH 43224. (614) 265-6300.

Dec. 4-7, 1988 - 50th Midwest Fish & Wildlife Conference. University Hilton Inn, Columbus, OH. For info: Dr. Tony J. Peterle, Ohio State University, Rm. 104, Botany and Zoology Bldg., 1735 Neil Ave., Columbus, OH 43210. (614) 292-5520.

Jan. 10-11, 1989 - Coolwater Fish Culture Meeting. South Bend Holiday Inn, South Bend, IN. For info: Gary Armstrong, IN DNR, 2650 State Road 44, Martinsville, IN 46151. (317) 342-5527.

Feb. 5-8, 1989 - A National Aquatic Resources Education Conference. San Antonio Marriott, San Antonio, TX. For info: Mark J. Reef, IAFWA, 444 N. Capitol St., NW, Suite 534, Washington, DC 20001. (202) 624-7890.

Feb. 12-16, 1989 - Aquaculture '89. The Westin Bonaventure Hotel, Los Angeles, CA. For info: Conference Headquarters, Crest International, 940 Emmett Ave., Suite 14, Belmont, CA 94002. (415) 595-2704.

Feb. 27, 28, March 1, 1989 - Iowa DNR Fisheries Bureau Statewide Meeting. DNR Conservation Education Center, Guthrie Center, IA. For info: Jim Mayhew, IA DNR, Wallace Building, Des Moines, IA 50319. (515) 281-6155.

May 21-27, 1989 - 13th Annual Meeting of the Early Life History Section of AFS. Merida, Yucatan, Mexico. For info: Andrea Frank, Mote Marine Laboratory, 1600 City Island Park, Sarasota, FL 34236. (813) 388-4441.



"Skinny legs! ... I got skinny legs!"